

# PRO-SPOT

"True non-contact measurement."

## Picture Perfect Measurements™

GSI presents a measurement system for fast, accurate, dense non-contact measurement of large surfaces such as molds, master models, panels, antennas, and other components.

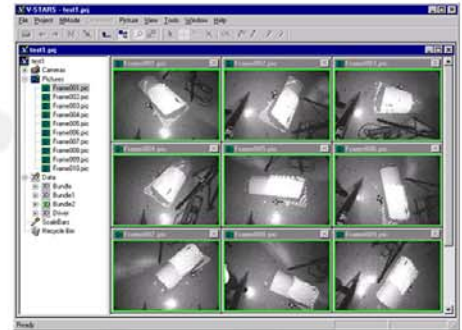


The system consists primarily of:

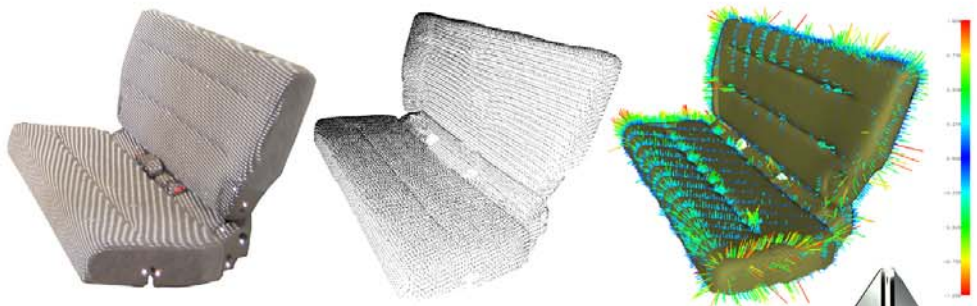
- The **PRO-SPOT** target projector
- One or more **INCA3** cameras
- Notebook computer and system software



**PRO-SPOT** works by projecting thousands of dots onto the surface. These dots are measured by a single camera **V-STARS/S** system or a multi-camera **V-STARS/M** system.



The **V-STAR/S** system can measure static objects by taking pictures from various locations using its single camera. The **V-STAR/M** system, by virtue of its synchronization, can freeze the dots on the surface and so is especially suited for moving objects or objects undergoing deformation.



# PRO-SPOT

## System Features...



### High Accuracy

- V-STARS/S 0.010 millimeter per 1.2 meter of object size
- V-STARS/M 0.025 millimeter per 1.2 meter of object size

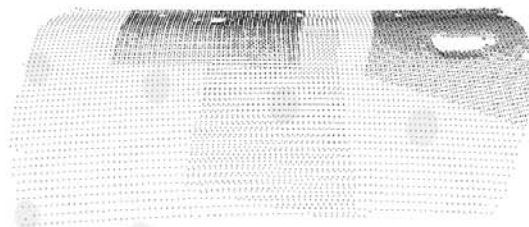
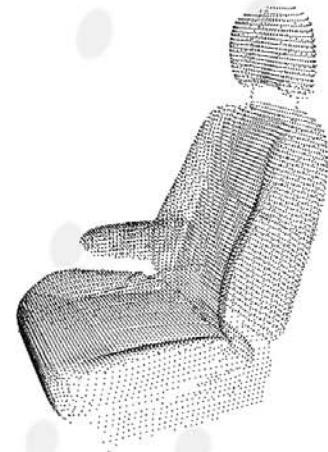


### Non-contact Measurement

- No surface deformation or movement
- No time or money spent on targeting
- No cumbersome probe or reflector needed
- No target thickness or probe offset to remove

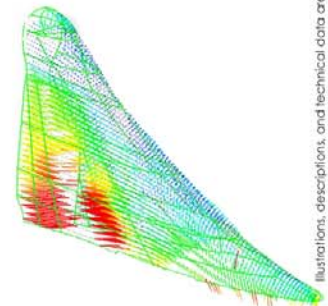
### Fast

- Instant data acquisition with V-STARS/M
- Minutes with V-STARS/S
- Fast, simple set-up and operation
- Fully automatic measurement
- 3D measurement of thousands of points in less than a minute



### Versatile

- Portable (Camera - 4kg, Projector - 5kg, notebook computer)
- Variable point densities (up to 22,000 points per setup)
- Variable point patterns
- Measures objects up to 6 meters in diameter in a single setup
- Measurement volume practically unlimited using multiple setups
- Rugged system designed for in-place measurement in industrial environments (Temperature 0 - 40°C)



**For more information on this exciting new development in measurement technology please contact GSI.**